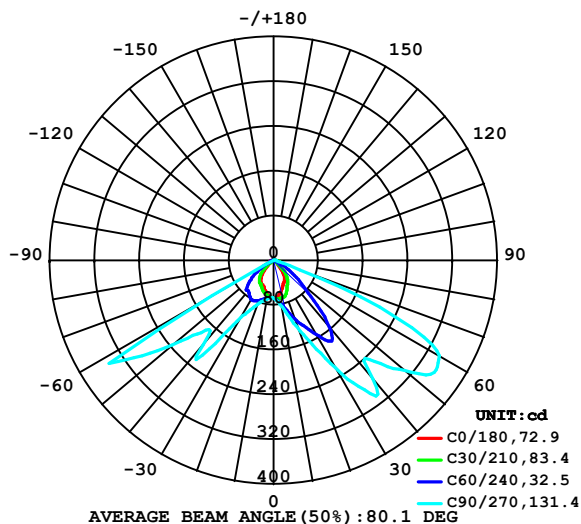


LUMINAIRE PHOTOMETRIC TEST REPORT

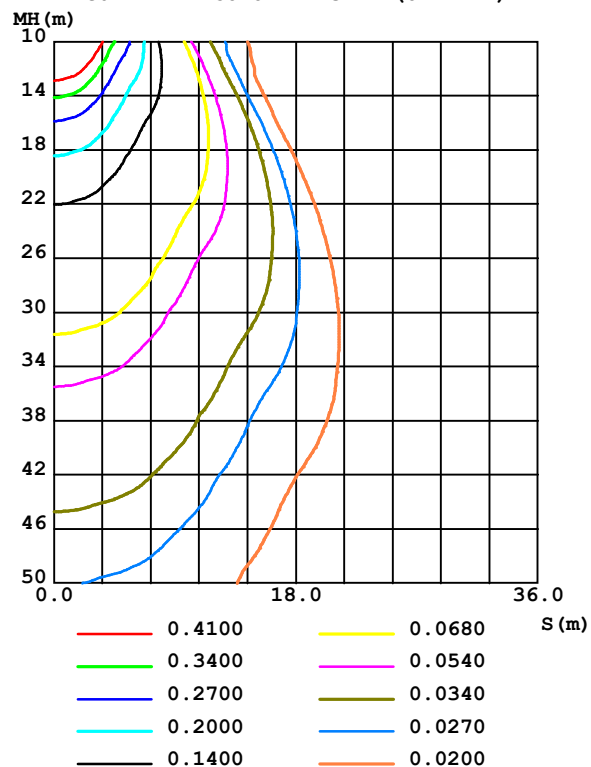
Test:U:4.2000V I:0.4700A P:1.9740W PF:0.9000 Freq:50.00Hz Lamp Flux:278.502x1 lm		
NAME: Emergency CYCLOP	TYPE:	WEIGHT:
SPEC.:	DIM.:	SERIAL No.:
MFR.:	SUR.: 21cm*16cm	Shielding Angle:

DATA OF LAMP		PHOTOMETRIC DATA				Eff: 141.09 lm/W
MODEL	D908S	Imax (cd)	351.1	S/MH (C0/180)	1.01	
NOMINAL POWER(W)		LOR (%)	100.0	S/MH (C90/270)	2.45	
RATED VOLTAGE(V)	4.2	TOTAL FLUX(lm)	278.50	η UP,DN (C0-180)	0.0,57.6	
NOMINAL FLUX(lm)	278.502	CIE CLASS	DIRECT	η UP,DN (C180-360)	0.0,42.4	
LAMPS INSIDE	1	η up (%)	0.0	CIBSE SHR NOM	0.50	
TEST VOLTAGE(V)	4.2	η down (%)	100.0	CIBSE SHR MAX	0.70	

LUMINOUS INTENSITY DISTRIBUTION DIAGRAM



C0 PLANE ISOLUX DIAGRAM (UNIT:lx)



C Range: 0 - 360DEG
C Interval: 15.0DEG
Test Speed: HIGH
Temperature: 25.3°C
Operators:
Test Date: 2023-06-23

γ Range: 0 - 180DEG
 γ Interval: 1.0DEG
Test System: EVERFINE GO-R5000_V2 SYSTEM V2.00.471
Humidity: 65.0%
Test Distance: 2.506m [K=1.0000]
Remarks:

ZONAL FLUX DIAGRAM

ZONAL FLUX DIAGRAM:

γ	C0	C45	C90	C135	C180	C225	C270	C315	γ	Φ zone	Φ total	%lum, lamp
10	62.63	74.31	82.61	72.73	63.68	66.76	70.43	64.44	0- 10	6.567	6.567	2.36,2.36
20	49.35	86.15	130.6	72.30	51.91	65.19	84.12	57.10	10- 20	20.44	27.01	9.7,9.7
30	40.22	78.33	223.0	59.88	45.98	56.54	118.1	47.54	20- 30	36.49	63.50	22.8,22.8
40	25.20	54.88	276.6	49.96	31.40	49.00	197.2	37.55	30- 40	56.84	120.3	43.2,43.2
50	11.83	30.66	306.4	27.21	15.29	31.04	236.0	18.90	40- 50	57.10	177.4	63.7,63.7
60	9.539	6.850	342.0	8.215	10.40	7.424	127.2	6.955	50- 60	59.97	237.4	85.2,85.2
70	7.163	4.493	50.86	5.077	6.981	4.533	0.2801	4.658	60- 70	33.01	270.4	97.1,97.1
80	1.765	1.534	3.098	2.052	3.476	1.995	0.0438	6.372	70- 80	6.638	277.1	99.5,99.5
90	0.0010	0.0353	0.0648	0.0055	0.0019	0.0015	0.2012	0.0005	80- 90	1.308	278.4	100,100
100	0.0010	0.0460	0.0711	0.0203	0.0010	0.0019	0.0039	0.0005	90-100	0.0406	278.4	100,100
110	0.0010	0.0498	0.0516	0.0344	0.0010	0.0019	0.0145	0.0005	100-110	0.0194	278.4	100,100
120	0.0010	0.0518	0.0242	0.0373	0.0010	0.0029	0.0203	0.0015	110-120	0.0190	278.4	100,100
130	0.0010	0.0532	0.0295	0.0387	0.0029	0.0048	0.0208	0.0034	120-130	0.0181	278.5	100,100
140	0.0015	0.0532	0.0145	0.0387	0.0039	0.0111	0.0208	0.0068	130-140	0.0169	278.5	100,100
150	0.0034	0.0382	0.0116	0.0358	0.0063	0.0121	0.0179	0.0082	140-150	0.0126	278.5	100,100
160	0.0048	0.0068	0.0087	0.0276	0.0077	0.0097	0.0092	0.0082	150-160	0.0064	278.5	100,100
170	0.0058	0.0111	0.0082	0.0068	0.0097	0.0097	0.0077	0.0082	160-170	0.0025	278.5	100,100
180	0.0087	0.0087	0.0082	0.0073	0.0087	0.0092	0.0077	0.0077	170-180	0.0008	278.5	100,100
DEG	LUMINOUS INTENSITY:cd									UNIT:lm		

Conical surface Flux(90deg): 149.06 lm

%lum = 53.5%

%lamp = 53.5%

Conical surface Flux(120deg): 237.41 lm

%lum = 85.2%

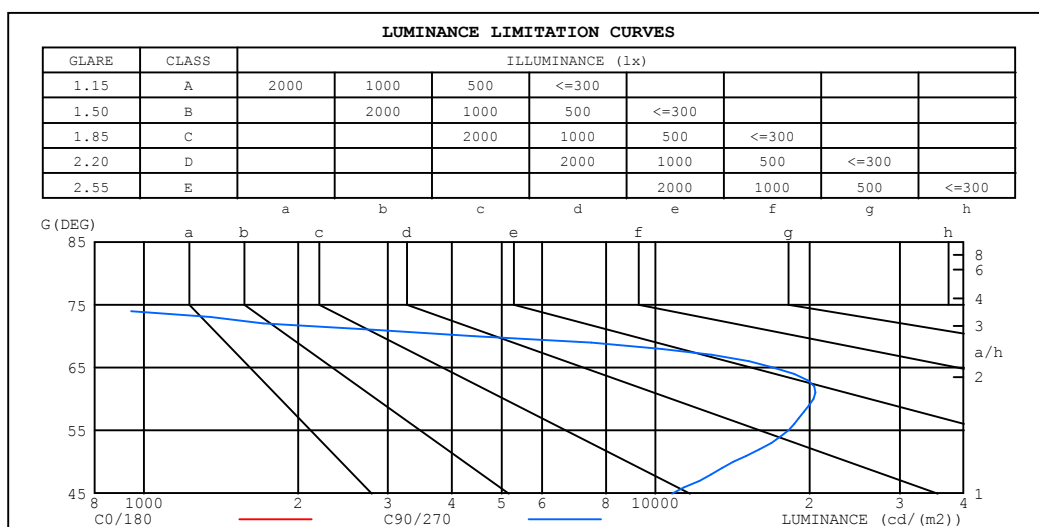
%lamp = 85.2%

C Range: 0 - 360DEG
 C Interval: 15.0DEG
 Test Speed: HIGH
 Temperature:25.3°C
 Operators:
 Test Date:2023-06-23

γ Range: 0 - 180DEG
 γ Interval: 1.0DEG
 Test System:EVERFINE GO-R5000_V2 SYSTEM V2.00.471
 Humidity:65.0%
 Test Distance:2.506m [K=1.0000]
 Remarks:

LUMINANCE LIMITATION CURVES

Test:U:4.2000V I:0.4700A P:1.9740W PF:0.9000 Freq:50.00Hz Lamp Flux:278.502x1 lm		
NAME: Emergency CYCLOP	TYPE:	WEIGHT:
SPEC.:	DIM.:	SERIAL No.:
MFR.:	SUR.: 21cm*16cm	Shielding Angle:



LUMINANCE cd/ (m2)		
G (DEG)	C0/180	C90/270
85	48	152
80	303	531
75	563	495
70	623	4426
65	597	16974
60	568	20358
55	563	18194
50	548	14189
45	710	10768

C Range: 0 - 360DEG
C Interval: 15.0DEG
Test Speed: HIGH
Temperature:25.3°C
Operators:
Test Date:2023-06-23

γ Range: 0 - 180DEG
 γ Interval: 1.0DEG
Test System:EVERFINE GO-R5000_V2 SYSTEM V2.00.471
Humidity:65.0%
Test Distance:2.506m [K=1.0000]
Remarks:

WEC AND CCEC

Test:U:4.2000V I:0.4700A P:1.9740W PF:0.9000 Freq:50.00Hz Lamp Flux:278.502x1 lm		
NAME: Emergency CYCLOP6	TYPE:	WEIGHT:
SPEC.:	DIM.:	SERIAL No.:
MFR.:	SUR.: 21cm*16cm	Shielding Angle:

pcc	80%			70%			50%			30%			10%			0	
pw	50%	30%	10%	50%	30%	10%	50%	30%	10%	50%	30%	10%	50%	30%	10%	0	
pfc	20%			20%			20%			20%			20%			0	
RCR	RCR:Room Cavity Ratio						Wall Exitance Coefficients(WEC)										
0.0																	
1.0	.281	.160	.051	.274	.156	.050	.261	.149	.048	.248	.143	.046	.237	.138	.044		
2.0	.275	.151	.046	.269	.148	.046	.258	.143	.044	.247	.138	.043	.237	.134	.042		
3.0	.261	.139	.042	.256	.137	.041	.246	.133	.040	.236	.129	.040	.227	.126	.039		
4.0	.245	.128	.037	.241	.126	.037	.231	.123	.037	.223	.120	.036	.215	.117	.036		
5.0	.230	.117	.034	.225	.116	.034	.217	.113	.033	.209	.111	.033	.202	.108	.032		
6.0	.215	.108	.031	.211	.106	.031	.203	.104	.030	.197	.102	.030	.190	.100	.030		
7.0	.201	.099	.028	.197	.098	.028	.191	.096	.028	.185	.095	.028	.179	.093	.027		
8.0	.188	.092	.026	.185	.091	.026	.179	.090	.026	.174	.088	.025	.168	.086	.025		
9.0	.177	.085	.024	.174	.085	.024	.169	.083	.024	.164	.082	.023	.159	.081	.023		
10.0	.166	.080	.022	.164	.079	.022	.159	.078	.022	.155	.077	.022	.150	.076	.022		

pcc	80%			70%			50%			30%			10%			0
pw	50%	30%	10%	50%	30%	10%	50%	30%	10%	50%	30%	10%	50%	30%	10%	0
pfc	20%			20%			20%			20%			20%			0
RCR	RCR:Room Cavity Ratio						Ceiling Cavity Exitance Coefficients(CCEC)									
0.0	.191	.191	.191	.163	.163	.163	.111	.111	.111	.064	.064	.064	.020	.020	.020	
1.0	.179	.157	.137	.153	.135	.118	.105	.093	.082	.060	.054	.047	.019	.017	.015	
2.0	.170	.132	.100	.146	.114	.087	.100	.079	.061	.058	.046	.035	.019	.015	.012	
3.0	.163	.115	.076	.140	.099	.066	.096	.069	.046	.055	.040	.027	.018	.013	.009	
4.0	.156	.101	.059	.134	.088	.051	.092	.061	.036	.053	.036	.021	.017	.012	.007	
5.0	.150	.091	.048	.128	.079	.041	.088	.055	.029	.051	.032	.017	.017	.011	.006	
6.0	.143	.083	.039	.123	.072	.034	.085	.050	.024	.049	.029	.014	.016	.010	.005	
7.0	.137	.076	.033	.117	.066	.029	.081	.046	.021	.047	.027	.012	.015	.009	.004	
8.0	.130	.070	.029	.112	.061	.025	.078	.043	.018	.045	.025	.011	.015	.008	.004	
9.0	.124	.065	.025	.107	.057	.022	.074	.040	.016	.043	.024	.009	.014	.008	.003	
10.0	.119	.061	.023	.102	.053	.020	.071	.037	.014	.041	.022	.008	.013	.007	.003	

C Range: 0 - 360DEG
C Interval: 15.0DEG
Test Speed: HIGH
Temperature:25.3℃
Operators:
Test Date:2023-06-23

γ Range: 0 - 180DEG
γ Interval: 1.0DEG
Test System:EVERFINE GO-R5000_V2 SYSTEM V2.00.471
Humidity:65.0%
Test Distance:2.506m [K=1.0000]
Remarks:

UGR(Unified Glare Rating) Table

Test:U:4.2000V I:0.4700A P:1.9740W PF:0.9000 Freq:50.00Hz Lamp Flux:278.502x1 lm										
NAME: Emergency CYCLOP					TYPE:			WEIGHT:		
SPEC.:					DIM.:			SERIAL No.:		
MFR.:					SUR.: 21cm*16cm			Shielding Angle:		
ceiling/cavity	0.7	0.7	0.5	0.5	0.3	0.7	0.7	0.5	0.5	0.3
walls	0.5	0.3	0.5	0.3	0.3	0.5	0.3	0.5	0.3	0.3
working plane	0.2	0.2	0.2	0.2	0.2	0.2	0.2	0.2	0.2	0.2
Room dimensions	Viewed crosswise					Viewed endwise				
x = 2H y = 2H	12.1	13.6	12.4	13.8	14.0	31.7	33.2	32.0	33.4	33.6
3H	13.1	14.5	13.4	14.7	15.0	32.6	34.0	32.9	34.2	34.4
4H	14.7	16.0	15.0	16.3	16.5	32.5	33.8	32.8	34.0	34.3
6H	18.2	19.5	18.6	19.8	20.0	32.4	33.6	32.7	33.9	34.2
8H	18.4	19.6	18.8	19.9	20.2	32.3	33.5	32.7	33.8	34.1
12H	18.4	19.5	18.7	19.8	20.1	32.3	33.4	32.6	33.7	34.0
4H 2H	16.2	17.5	16.5	17.8	18.0	31.4	32.7	31.7	32.9	33.2
3H	16.5	17.6	16.8	17.9	18.2	32.3	33.4	32.6	33.7	34.0
4H	17.6	18.6	18.0	19.0	19.3	32.2	33.2	32.5	33.5	33.9
6H	22.1	23.0	22.4	23.3	23.7	32.1	33.0	32.5	33.3	33.7
8H	22.3	23.1	22.7	23.5	23.9	32.0	32.9	32.4	33.2	33.6
12H	22.2	23.0	22.7	23.4	23.8	32.0	32.8	32.4	33.1	33.6
8H 4H	17.8	18.6	18.2	19.0	19.4	32.0	32.9	32.4	33.2	33.6
6H	22.5	23.2	22.9	23.6	24.0	32.0	32.6	32.4	33.1	33.5
8H	22.7	23.4	23.2	23.8	24.2	31.9	32.5	32.4	33.0	33.4
12H	22.7	23.2	23.2	23.7	24.2	31.9	32.4	32.4	32.8	33.3
12H 4H	17.7	18.5	18.2	18.9	19.3	32.0	32.8	32.4	33.1	33.6
6H	22.5	23.1	22.9	23.5	23.9	31.9	32.5	32.4	33.0	33.4
8H	22.7	23.2	23.2	23.7	24.2	31.9	32.4	32.4	32.9	33.3
Variations with the observer position at spacings(CIE Pub.117):										
S = 1.0H	+ 0.7 / - 0.7					+ 0.8 / - 0.4				
1.5H	+ 0.7 / - 0.6					+ 2.1 / - 8.6				
2.0H	+ 1.1 / - 1.7					+ 3.8 / -15.8				

CIE Pub.117, 278.5 lm Total Lamp Luminous Flux Correct (8log(F/F0) = -4.4)
Area: 0.0336 m2

C Range: 0 - 360DEG
C Interval: 15.0DEG
Test Speed: HIGH
Temperature:25.3°C
Operators:
Test Date:2023-06-23

γ Range: 0 - 180DEG
γ Interval: 1.0DEG
Test System:EVERFINE GO-R5000_V2 SYSTEM V2.00.471
Humidity:65.0%
Test Distance:2.506m [K=1.0000]
Remarks:

UTILIZATION FACTORS TABLE

Test:U:4.2000V I:0.4700A P:1.9740W PF:0.9000 Freq:50.00Hz Lamp Flux:278.502x1 lm		
NAME: Emergency CYCLOP	TYPE:	WEIGHT:
SPEC.:	DIM.:	SERIAL No.:
MFR.:	SUR.: 21cm*16cm	Shielding Angle:

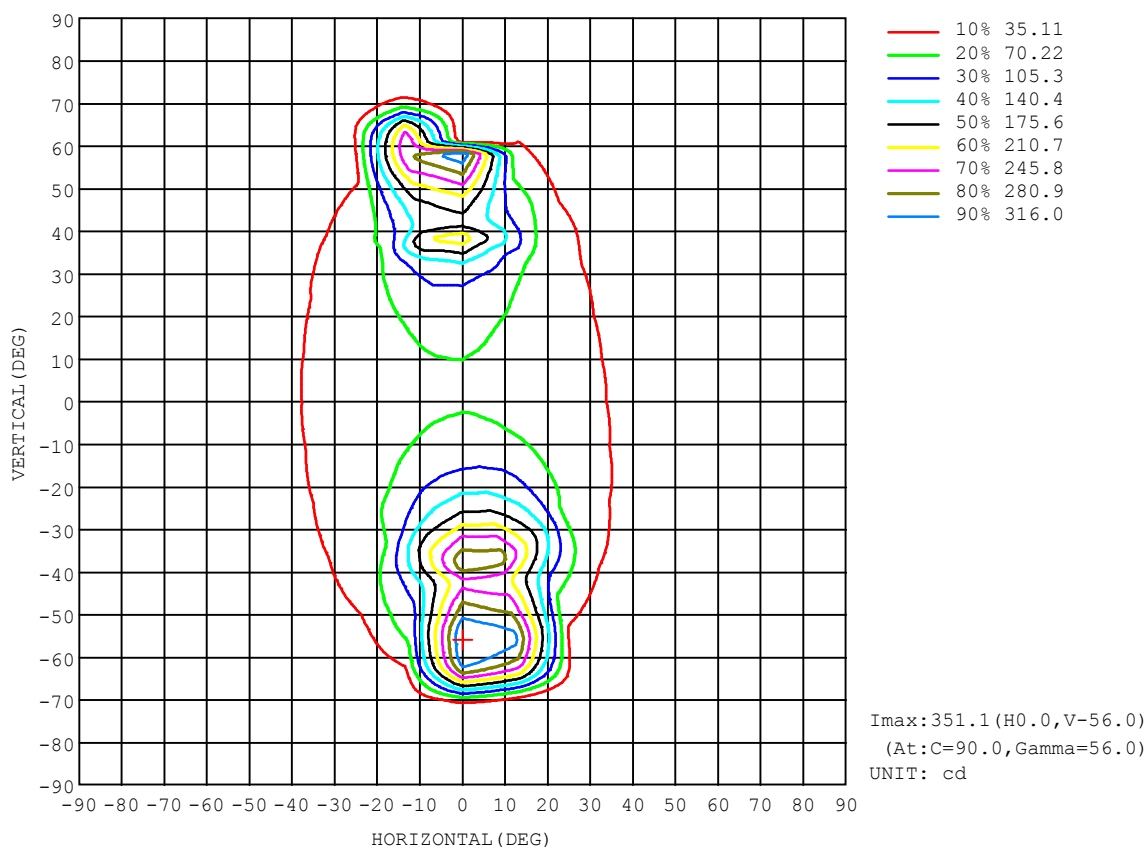
REFLECTANCE										
Ceiling	0.8	0.8	0.8	0.7	0.7	0.7	0.5	0.5	0.5	0
Walls	0.7	0.5	0.3	0.7	0.5	0.3	0.7	0.5	0.3	0
Working plane	0.2	0.2	0.2	0.2	0.2	0.2	0.2	0.2	0.2	0
ROOM INDEX	UTILIZATION FACTORS (PERCENT) $k(RI) \times RCR = 5$									
$k = 0.60$	56	44	36	55	43	36	54	43	36	29
0.80	67	55	47	66	54	47	64	54	47	40
1.00	76	65	58	75	65	58	73	66	57	50
1.25	84	74	67	83	73	66	80	72	66	58
1.50	89	80	73	88	79	72	85	77	71	64
2.00	96	88	82	95	87	82	91	85	80	72
2.50	100	93	87	98	92	86	94	89	84	76
3.00	104	97	92	101	96	91	97	93	89	81
4.00	107	102	98	105	100	96	101	97	94	85
5.00	110	105	101	107	103	100	103	100	97	88
ROOM INDEX	UF (total)									Direct
According to DIN EN 13032-2 2004			Suspended					SHR NOM = 1.25		

C Range: 0 - 360DEG
 C Interval: 15.0DEG
 Test Speed: HIGH
 Temperature: 25.3°C
 Operators:
 Test Date: 2023-06-23

γ Range: 0 - 180DEG
 γ Interval: 1.0DEG
 Test System: EVERFINE GO-R5000_V2 SYSTEM V2.00.471
 Humidity: 65.0%
 Test Distance: 2.506m [K=1.0000]
 Remarks:

ISOCANDELA DIAGRAM

Test:U:4.2000V I:0.4700A P:1.9740W PF:0.9000 Freq:50.00Hz Lamp Flux:278.502x1 lm		
NAME: Emergency CYCLOP	TYPE:	WEIGHT:
SPEC.:	DIM.:	SERIAL No.:
MFR.:	SUR.: 21cm*16cm	Shielding Angle:

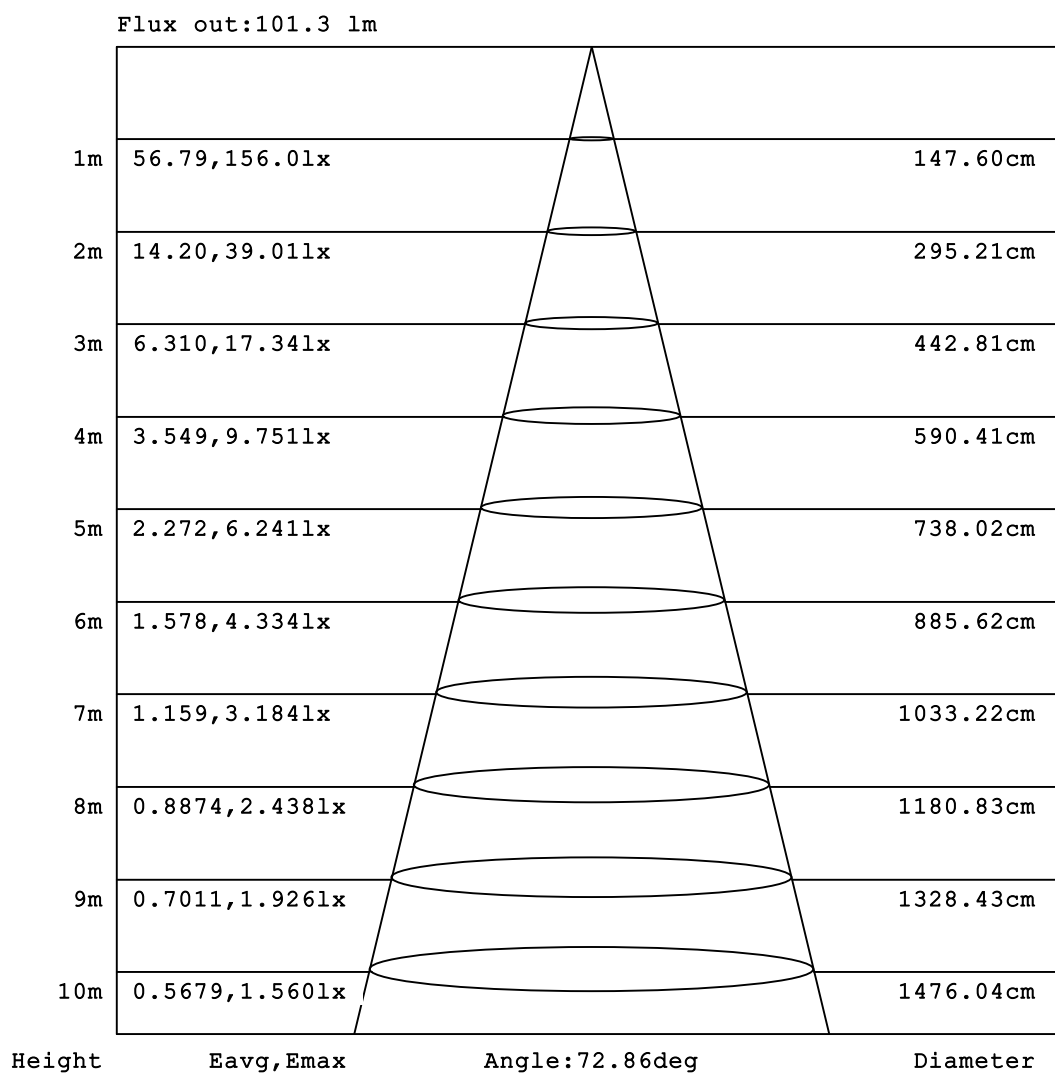


C Range: 0 - 360DEG
C Interval: 15.0DEG
Test Speed: HIGH
Temperature:25.3°C
Operators:
Test Date:2023-06-23

γ Range: 0 - 180DEG
γ Interval: 1.0DEG
Test System:EVERFINE GO-R5000_V2 SYSTEM V2.00.471
Humidity:65.0%
Test Distance:2.506m [K=1.0000]
Remarks:

AAI Figure

Test:U:4.2000V I:0.4700A P:1.9740W PF:0.9000 Freq:50.00Hz Lamp Flux:278.502x1 lm		
NAME: Emergency CYCLOP	TYPE:	WEIGHT:
SPEC.:	DIM.:	SERIAL No.:
MFR.:	SUR.: 21cm*16cm	Shielding Angle:

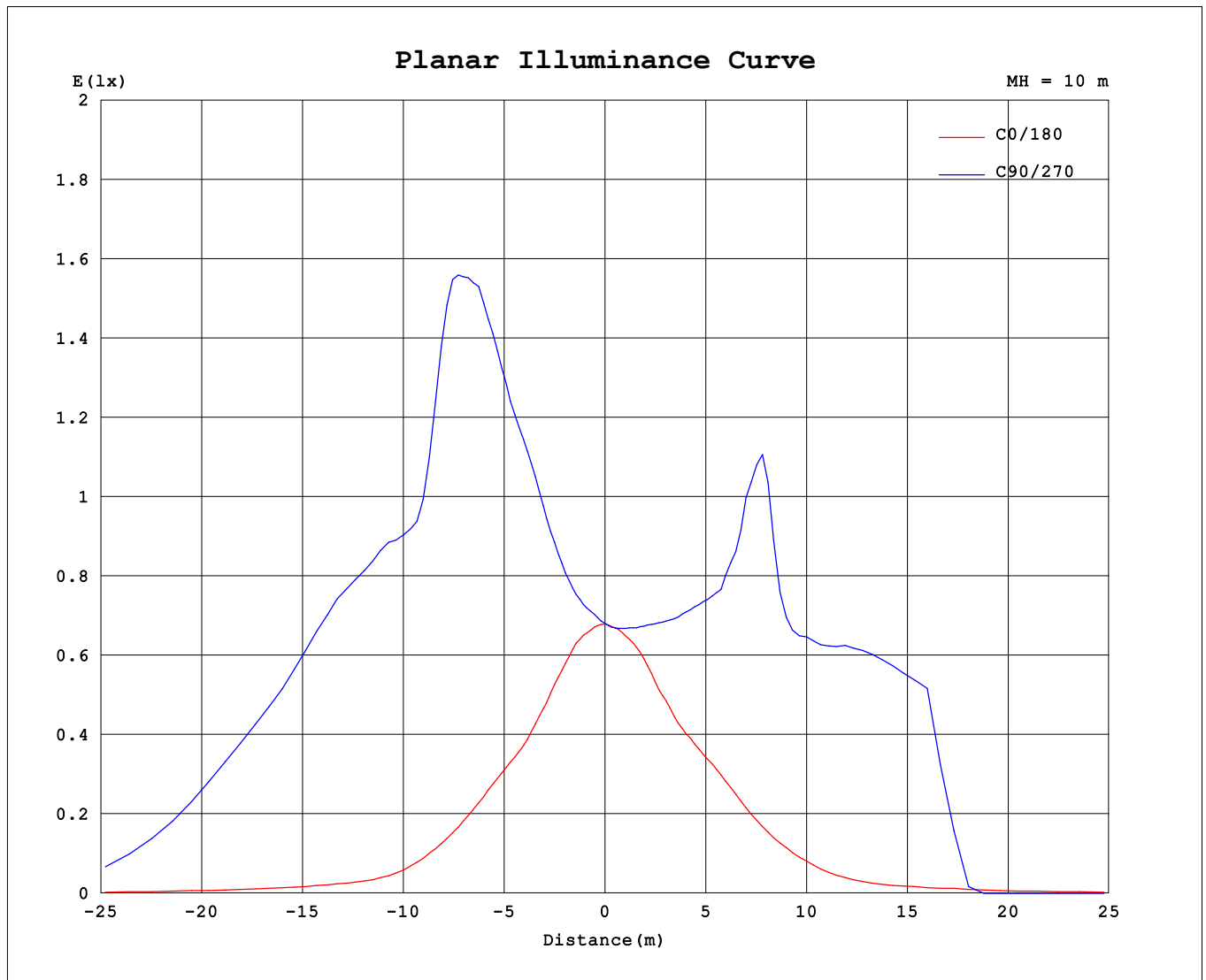


Note: The Curves indicate the illuminated area and the average illumination when the luminaire is at different distance.

C Range: 0 - 360DEG
C Interval: 15.0DEG
Test Speed: HIGH
Temperature: 25.3°C
Operators:
Test Date: 2023-06-23

γ Range: 0 - 180DEG
γ Interval: 1.0DEG
Test System: EVERFINE GO-R5000_V2 SYSTEM V2.00.471
Humidity: 65.0%
Test Distance: 2.506m [K=1.0000]
Remarks:

Planar Illuminance Curve



C Range: 0 - 360DEG
C Interval: 15.0DEG
Test Speed: HIGH
Temperature: 25.3°C
Operators:
Test Date: 2023-06-23

γ Range: 0 - 180DEG
 γ Interval: 1.0DEG
Test System: EVERFINE GO-R5000_V2 SYSTEM V2.00.471
Humidity: 65.0%
Test Distance: 2.506m [K=1.0000]
Remarks:

LUMINOUS DISTRIBUTION INTENSITY DATA

Test:U:4.2000V I:0.4700A P:1.9740W PF:0.9000 Freq:50.00Hz Lamp Flux:278.502x1 lm		
NAME: Emergency CYCLOP	TYPE:	WEIGHT:
SPEC.:	DIM.:	SERIAL No.:
MFR.:	SUR.: 21cm*16cm	Shielding Angle:

Table--1

UNIT: cd

C (DEG) γ (DEG)	0	15	30	45	60	75	90	105	120	135	150	165	180	195	210	225	240	255	270
0	68.1	68.1	68.1	68.1	68.1	68.1	68.2	68.1	68.2	68.2	68.1	68.1	68.1	68.1	68.1	68.1	68.1	68.1	68.2
5	66.6	67.7	69.0	70.5	71.8	72.6	72.8	72.1	71.3	70.2	68.8	67.4	66.5	66.1	66.3	66.5	66.9	67.4	67.7
10	62.6	65.6	69.6	74.3	78.6	81.8	82.6	80.6	77.0	72.7	68.4	65.3	63.7	63.4	64.7	66.8	68.6	70.0	70.4
15	56.2	61.3	69.0	79.8	92.7	101	101	95.2	84.3	73.7	64.9	59.2	57.2	58.1	61.7	67.1	72.6	75.9	75.8
20	49.4	53.7	65.5	86.1	112	128	131	114	92.0	72.3	60.1	53.7	51.9	53.1	57.3	65.2	76.7	84.7	84.1
25	44.6	47.5	57.5	84.9	130	163	167	137	94.3	65.9	54.3	50.3	49.0	49.3	51.9	61.6	80.2	96.5	97.9
30	40.2	43.1	50.6	78.3	153	216	223	164	89.0	59.9	51.1	46.9	46.0	46.6	48.8	56.5	80.9	113	118
35	33.4	36.5	44.6	65.4	177	271	283	195	74.1	56.4	46.1	40.4	39.4	40.8	45.1	53.1	76.1	149	182
40	25.2	28.4	36.6	54.9	155	267	277	174	67.9	50.0	37.9	32.1	31.4	32.9	38.4	49.0	71.5	187	197
45	16.9	19.5	26.6	44.6	102	234	256	123	61.7	39.9	27.6	23.6	23.1	24.9	30.6	42.2	67.0	158	183
50	11.8	11.1	15.1	30.7	66.7	276	306	101	49.4	27.2	17.3	15.8	15.3	15.0	18.5	31.0	53.3	189	236
55	10.9	9.47	8.17	14.5	42.7	317	351	82.1	30.7	13.1	10.8	11.2	11.3	10.0	9.16	16.1	36.1	246	304
60	9.54	8.61	7.16	6.85	20.3	297	342	55.6	13.5	8.21	8.37	9.55	10.4	8.50	7.55	7.42	17.8	281	127
65	8.48	7.67	5.78	5.57	9.20	204	241	21.6	6.72	6.20	7.05	7.70	8.20	7.07	5.88	5.83	6.97	227	0.34
70	7.16	6.23	4.88	4.49	7.72	35.0	50.9	8.92	5.06	5.08	6.34	6.82	6.98	5.51	5.15	4.53	6.05	64.0	0.28
75	4.89	14.2	3.20	3.34	4.60	4.55	4.31	4.47	3.78	3.95	4.89	7.73	5.40	4.95	3.78	3.45	4.70	7.92	0.11
80	1.76	28.4	10.7	1.53	1.70	3.46	3.10	1.99	2.05	2.05	16.6	7.14	3.48	8.21	2.65	1.99	1.92	3.44	0.04
85	0.14	0.15	0.17	0.22	0.32	0.37	0.44	0.52	0.59	0.53	0.79	0.57	0.66	0.60	0.53	0.45	0.68	0.41	0.13
90	0.00	0.00	0.00	0.04	0.06	0.06	0.06	0.06	0.05	0.01	0.00	0.00	0.00	0.00	0.00	0.00	0.40	0.17	0.20
95	0.00	0.00	0.00	0.04	0.06	0.06	0.07	0.06	0.05	0.01	0.00	0.00	0.00	0.00	0.00	0.00	0.15	0.02	0.03
100	0.00	0.00	0.00	0.05	0.06	0.06	0.07	0.06	0.05	0.02	0.00	0.00	0.00	0.00	0.00	0.00	0.00	0.01	0.00
105	0.00	0.00	0.01	0.05	0.06	0.07	0.07	0.07	0.06	0.03	0.00	0.00	0.00	0.00	0.00	0.00	0.00	0.01	0.01
110	0.00	0.00	0.02	0.05	0.06	0.07	0.05	0.07	0.06	0.03	0.00	0.00	0.00	0.00	0.00	0.00	0.01	0.02	0.01
115	0.00	0.00	0.03	0.05	0.06	0.06	0.02	0.07	0.06	0.04	0.00	0.00	0.00	0.00	0.00	0.00	0.01	0.02	0.02
120	0.00	0.00	0.03	0.05	0.06	0.05	0.02	0.06	0.06	0.04	0.00	0.00	0.00	0.00	0.00	0.00	0.01	0.02	0.02
125	0.00	0.00	0.03	0.05	0.07	0.06	0.03	0.06	0.06	0.04	0.01	0.00	0.00	0.00	0.00	0.00	0.01	0.02	0.02
130	0.00	0.00	0.04	0.05	0.06	0.07	0.03	0.07	0.06	0.04	0.01	0.00	0.00	0.00	0.00	0.00	0.01	0.02	0.02
135	0.00	0.00	0.03	0.05	0.06	0.06	0.02	0.07	0.06	0.04	0.01	0.00	0.00	0.00	0.00	0.01	0.01	0.02	0.02
140	0.00	0.01	0.03	0.05	0.06	0.05	0.01	0.06	0.06	0.04	0.01	0.00	0.00	0.00	0.01	0.01	0.01	0.02	0.02
145	0.00	0.01	0.03	0.05	0.04	0.03	0.01	0.06	0.06	0.04	0.01	0.00	0.00	0.01	0.01	0.01	0.01	0.02	0.02
150	0.00	0.01	0.03	0.04	0.03	0.01	0.01	0.03	0.05	0.04	0.01	0.00	0.01	0.01	0.01	0.01	0.01	0.02	0.02
155	0.00	0.01	0.03	0.02	0.01	0.01	0.01	0.02	0.04	0.03	0.01	0.01	0.01	0.01	0.01	0.01	0.01	0.01	0.01
160	0.00	0.01	0.03	0.01	0.01	0.01	0.01	0.01	0.02	0.03	0.01	0.01	0.01	0.01	0.01	0.01	0.01	0.01	0.01
165	0.01	0.01	0.01	0.01	0.01	0.01	0.01	0.01	0.01	0.01	0.01	0.01	0.01	0.01	0.01	0.01	0.01	0.01	0.01
170	0.01	0.01	0.01	0.01	0.01	0.01	0.01	0.01	0.01	0.01	0.01	0.01	0.01	0.01	0.01	0.01	0.01	0.01	0.01
175	0.01	0.01	0.01	0.01	0.01	0.01	0.01	0.01	0.01	0.01	0.01	0.01	0.01	0.01	0.01	0.01	0.01	0.01	0.01
180	0.01	0.01	0.01	0.01	0.01	0.01	0.01	0.01	0.01	0.01	0.01	0.01	0.01	0.01	0.01	0.01	0.01	0.01	0.01

C Range: 0 - 360DEG
C Interval: 15.0DEG
Test Speed: HIGH
Temperature:25.3℃
Operators:
Test Date:2023-06-23

γ Range: 0 - 180DEG
γ Interval: 1.0DEG
Test System:EVERFINE GO-R5000_V2 SYSTEM V2.00.471
Humidity:65.0%
Test Distance:2.506m [K=1.0000]
Remarks:

LUMINOUS DISTRIBUTION INTENSITY DATA

Test:U:4.2000V I:0.4700A P:1.9740W PF:0.9000 Freq:50.00Hz Lamp Flux:278.502x1 lm		
NAME: Emergency CYCLOP	TYPE:	WEIGHT:
SPEC.:	DIM.:	SERIAL No.:
MFR.:	SUR.: 21cm*16cm	Shielding Angle:

Table--2

UNIT: cd

C (DEG) γ (DEG)	285	300	315	330	345													
0	68.1	68.2	68.2	68.1	68.1													
5	67.3	66.7	66.0	65.6	65.9													
10	68.9	66.8	64.4	62.4	61.6													
15	72.6	67.1	60.9	57.1	55.3													
20	78.0	66.7	57.1	50.8	48.6													
25	85.7	66.6	51.8	45.2	43.9													
30	97.1	62.1	47.5	42.1	40.2													
35	112	56.9	43.7	36.8	33.8													
40	147	52.5	37.6	29.4	25.7													
45	106	49.1	29.0	20.7	17.7													
50	87.0	37.4	18.9	11.7	12.0													
55	63.4	21.4	8.62	8.73	10.3													
60	42.2	8.66	6.95	6.80	8.26													
65	23.0	6.07	5.47	5.71	7.61													
70	15.7	4.68	4.66	4.88	6.59													
75	8.36	2.86	2.86	6.85	4.67													
80	2.01	1.26	6.37	12.2	2.03													
85	0.88	0.20	0.15	0.14	0.14													
90	0.46	0.00	0.00	0.00	0.00													
95	0.27	0.00	0.00	0.00	0.00													
100	0.01	0.00	0.00	0.00	0.00													
105	0.00	0.00	0.00	0.00	0.00													
110	0.01	0.00	0.00	0.00	0.00													
115	0.01	0.00	0.00	0.00	0.00													
120	0.01	0.00	0.00	0.00	0.00													
125	0.01	0.01	0.00	0.00	0.00													
130	0.02	0.01	0.00	0.00	0.00													
135	0.01	0.01	0.01	0.00	0.00													
140	0.02	0.01	0.01	0.01	0.01													
145	0.02	0.01	0.01	0.01	0.01													
150	0.01	0.01	0.01	0.01	0.01													
155	0.01	0.01	0.01	0.01	0.01													
160	0.01	0.01	0.01	0.01	0.01													
165	0.01	0.01	0.01	0.01	0.01													
170	0.01	0.01	0.01	0.01	0.01													
175	0.01	0.01	0.01	0.01	0.01													
180	0.01	0.01	0.01	0.01	0.01													

C Range: 0 - 360DEG
C Interval: 15.0DEG
Test Speed: HIGH
Temperature:25.3℃
Operators:
Test Date:2023-06-23

γ Range: 0 - 180DEG
γ Interval: 1.0DEG
Test System:EVERFINE GO-R5000_V2 SYSTEM V2.00.471
Humidity:65.0%
Test Distance:2.506m [K=1.0000]
Remarks: